

## Our Mission

We desire to provide a strong educational foundation from a biblical perspective and partner with families in the homeschool community by providing enrichment activities in a classroom setting.



## Our Commitment

We will promote and uphold a Christ-centered atmosphere where homeschool students in grades 7-12 may participate in extra-curricular activities and take individual classes at Overland Christian School (OCS) in a traditional classroom setting or through our Online Extension Academy.

## HELP Overview

OCS has been providing services to homeschool families in the Greater Kansas City area for over twenty years. Our Homeschool Enrichment Learning Program (HELP) is designed as a Christian-based supplemental program that complements the homeschool curriculum in a traditional school environment.

At the junior high and high school level students may take advantage of the expertise and experience of our educated, Christian staff by enrolling in individual semester classes. Students enrolled in at least one class at OCS may be eligible to participate in our athletics department and other regularly scheduled activities open to the entire student body.



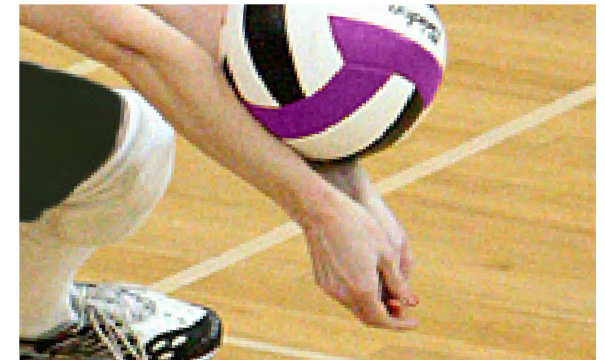
Courses of study:  
Bible  
Science/Math  
Advanced Math  
Foreign Language  
History/Geography  
Computer  
Grammar/Literature  
Music/Drama  
Physical Education  
Other

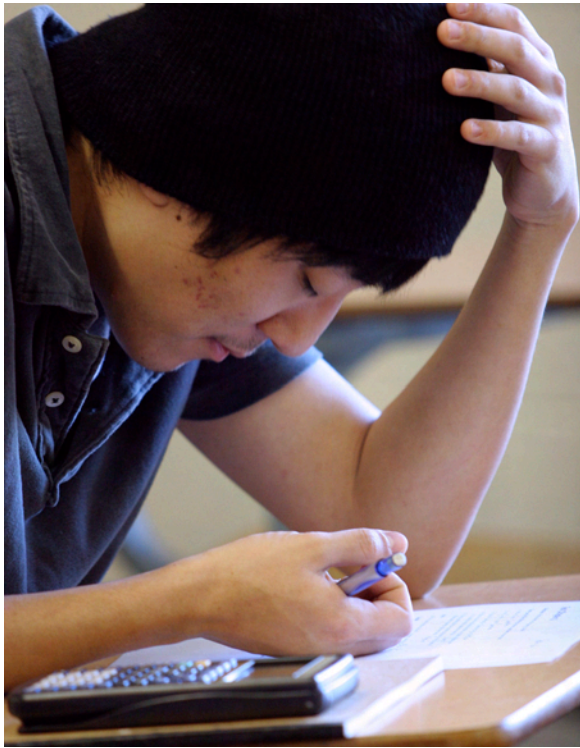
High school juniors and seniors may be eligible to earn College Now credits on our campus through Kansas City College and Bible School ([kccbs.edu](http://kccbs.edu)). These courses include English Composition, Intermediate Algebra, General Psychology, Introduction to Music Theory, Speech, General Biology, Old Testament Literature, and New Testament Literature.



## Class Schedule

Classes will be held between the hours of 8:35am and 3:20pm at Overland Christian Schools. The campus is located at 74th and Metcalf in Overland Park, Kansas. Class schedules for students in grades 7-12 will vary depending on the courses selected. Competitive sports, drama activities, and musical programs are usually in the evenings. Some College Now classes may be scheduled in the evening, as well.





## Program Cost

### Grades 7-12 Tuition

\$450 per full credit class, per year

\$300 per half credit class, per year

### Basic Fees

Enrollment Fee: \$50 per family

Supplies Fee: \$25 per student

### Miscellaneous Fees\* charged only to participants

Cafeteria Lunch \$2 each

Stanford Achievement Testing: \$50 per student

OCS Yearbook: \$40 per book

Party/Field Trip Participation: \$15 per student

ACSI Academic Competition: \$5 per student

Athletic Fees Vary

Lab Fees Vary

Graduation Fee: \$50 per student

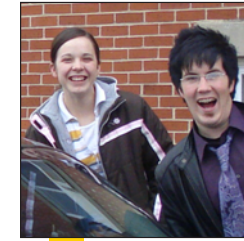
College Now Credit: \$145 per college credit hour

\*Consumables and uniforms are not included in the above prices.



Overland Christian Schools  
7401 Metcalf Avenue  
Overland Park, KS 66204

# Overland Christian Schools



# H

omeschool

# E

nrichment

# L

earning

# P

rogram

[www.overlandchristian.org](http://www.overlandchristian.org)  
913.722.0272

for students in grades 7-12